



**Infrastructure** You Can Rely On!

**Cloud Propeller, Inc. – MultiPortal User’s Guide**  
**Date:** December 3rd, 2025, **Version:** 0.0 (Pre Release)

## Contents

<b>Logging Into Cloud Propeller MultiPortal</b> .....	2
<b>MultiPortal Networking</b> .....	4
<b>Creating Virtual Machines</b> .....	6
Create Virtual Machine from Template.....	7
Create New Virtual Machine.....	10
<b>Common Issues and Resolution</b> .....	22



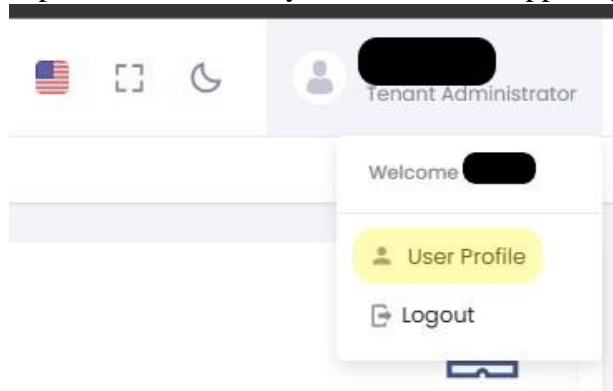
**Infrastructure** You Can Rely On!

**Cloud Propeller, Inc. – MultiPortal User’s Guide**

**Date:** December 3rd, 2025, **Version:** 0.0 (Pre Release)

## Logging Into Cloud Propeller MultiPortal

1. You will be provided with the following information.
  - a. MultiPortal URL. These can vary by service and availability zone you are subscribed to.
  - b. Your Username.
  - c. Your Password.
2. Double click inside the client on the server listed as shown in the picture. From your web browser visit the provided URL and login with the username and password provided.
3. It is highly recommended you change your password on first login and setup 2FA.
  - a. To change your password, click on your name in the upper right and click on



User Profile.

- b. Then click update password, fill in your old and new password twice, and click Update.
- c. After the password update it is best to logout, then back in with the new password to ensure it has been set properly.
    - d. From the User Profile section click on Security, then Enable Two-Factor Authentication. Follow the prompts to setup 2FA.
4. If you need to create additional accounts for your organization, you can do so.
  - a. From the Menu on the left click User Roles.

A screenshot of the 'Change Password' form within the MultiPortal user interface. The form has three tabs: 'Personal Details', 'Change Password' (which is active and highlighted in yellow), and 'Security'. Under the 'Change Password' tab, there are three input fields labeled 'Old Password', 'New Password', and 'Confirm Password'. An 'Update' button is located at the bottom right of the form.

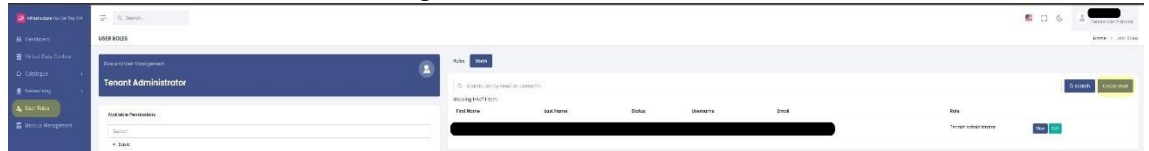


**Infrastructure** You Can Rely On!

## **Cloud Propeller, Inc. – MultiPortal User’s Guide**

**Date:** December 3rd, 2025, **Version:** 0.0 (Pre Release)

- b. Then click Create User on the right.



- c. Simple fill in their information and click Save. Please note you will need to share their initial login information along with this document with them.



**Infrastructure** You Can Rely On!

**Cloud Propeller, Inc. – MultiPortal User's Guide**

**Date:** December 3rd, 2025, **Version:** 0.0 (Pre Release)

## **MultiPortal Networking**

1. MultiPortal has 2 types of networks available.
  - a. **Internal Networks** – These are software defined networks similar to VMWare NSX. This is currently not the typical deployment by Cloud Propeller at the time of this document and will not be included in the guide at this time.
  - b. **External Networks** – The typical Enterprise Cloud Deployment at Cloud Propeller is done by providing real underlying VLANs to the client's environment. Functions such as Firewall, Routing, DHCP, etc are typically configured on the client's Virtual Firewall Appliance. Cloud Propeller's default firewall appliance is generally Palo Alto, but the client can setup any virtual firewall they like.
2. External Networks generally have 2 types with different intended purposes.
  - a. **P-VLAN** – These are used for Public Internet access with use of Public IP addresses. Generally, client's will be provided a block of Public IP addresses which they can assign to their virtual machines. Typically, these would only be assigned to your virtual firewall appliance to provide internet to your other virtual machines.
    - i. **NOTE:** Although you can assign your P-VLAN and public IPs to any virtual machine, it is highly advised you only assign them to a virtual firewall for security purposes. Your virtual firewall can be used to setup NAT to expose your VMs to the public internet if required. Further setup is not within the scope of this specific document.
  - b. **C-VLAN** – These are used for your private LAN networks. Typically, these are what you will connect to your virtual machines. Although these will have preassigned subnets assigned, they do not provide all the pieces required to gain network access. Namely you will still need to provide routing, DHCP, and DNS services.
    - i. **NOTE:** A typically enterprise deployment would use the client's virtual firewall for routing, possibly also DHCP and DNS. However, DHCP and DNS are typically configured on the client's Domain Controller. This is completely based on the needs of the client.

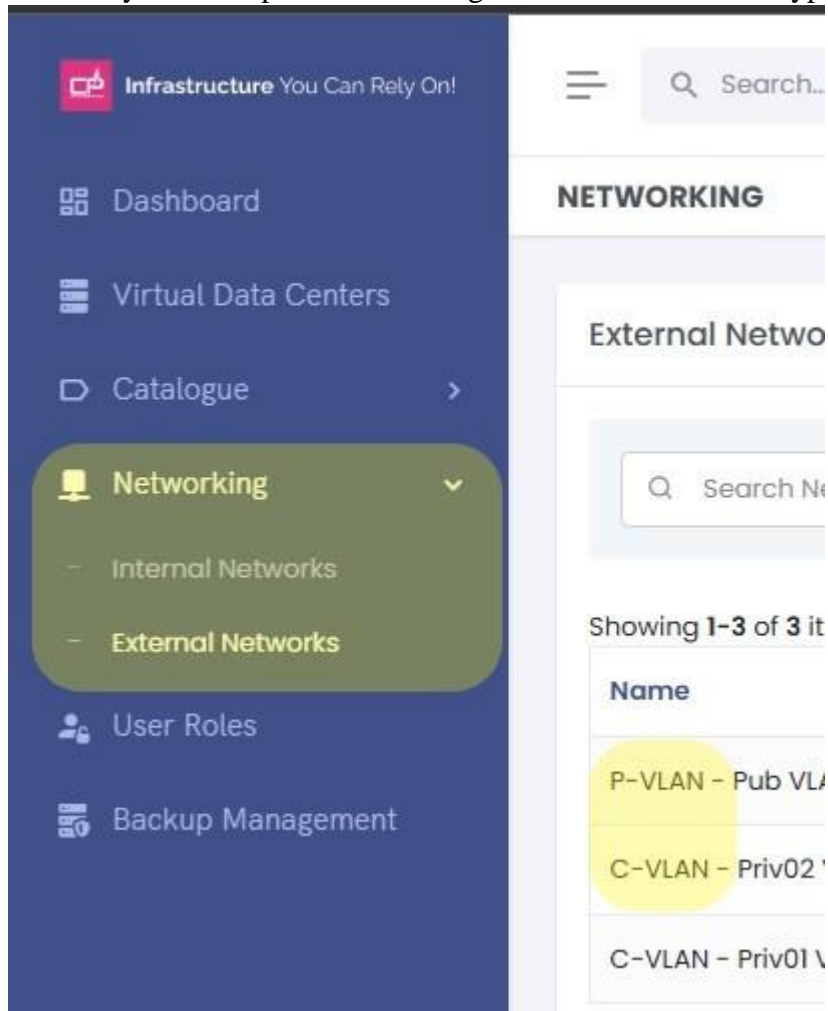


**Infrastructure** You Can Rely On!

**Cloud Propeller, Inc. – MultiPortal User’s Guide**

**Date:** December 3rd, 2025, **Version:** 0.0 (Pre Release)

3. From the left menu you can expand Networking and view the different types of networks



available.



**Infrastructure** You Can Rely On!

**Cloud Propeller, Inc. – MultiPortal User's Guide**  
**Date:** December 3rd, 2025, **Version:** 0.0 (Pre Release)

## Creating Virtual Machines

1. From the left menu navigate to Virtual Data Centers→Then the desired Virtual Data Center (clients will typically have 1 virtual Data Center).
2. From your data center click New Virtual Machine. You can choose to create a **New Virtual Machine** (install the operating system from ISO) or **From Template** (pre-built operating system templates).



Infrastructure You Can Rely On!

## Cloud Propeller, Inc. – MultiPortal User’s Guide

**Date:** December 3rd, 2025, **Version:** 0.0 (Pre Release)

### Create Virtual Machine from Template

1. Fill in the name of the VM (note this has no relation to the hostname of the guest OS) and choose the OS type. Click Next.

Create Virtual Machine from template

Create Virtual Machine from template

General Configuration   Templates   System Setup

1/3  
General Configuration  
Configure the basic settings for your new virtual machine, including its name and operating system.

Name

NewVM

Give your Virtual Machine an identifying name you will remember them by.

Choose OS Type

Windows   Linux   Unix   Other

Next Step →

2. Choose the Template. These templates can be provided by Cloud Propeller or be created by your organization. Click Next.

Create Virtual Machine from template

Create Virtual Machine from template

General Configuration   Templates   System Setup

2/3  
Template  
Select a template to create a new virtual machine.

Showing 1-1 of 1 item.

Name	CPU Cores	Public	Memory	Storage
T--win-server-2k22-std--2025-11-13	1	Yes	8.00 GiB	80.00 GiB

Select by clicking on the template name

← Back   Next Step →

3. Choose the Storage Policy. Client’s will typically only have one storage policy available, however additional could be available (Ex: to reduce the fault domain from an array offline).



**Infrastructure** You Can Rely On!

## Cloud Propeller, Inc. – MultiPortal User's Guide

**Date:** December 3rd, 2025, **Version:** 0.0 (Pre Release)

Click Create Virtual Machine.

Create Virtual Machine from template ×

Create Virtual Machine from template

General Configuration	Templates	System Setup
<p>3/3</p> <p><b>System Setup</b></p> <p>Setup the system configuration for the new virtual machine.</p> <p><b>Storage Policy</b></p> <div>PLATINUM-P2 <span>✓</span> <span>▼</span></div> <p><span>←</span> Back <span>Create Virtual Machine</span></p>		

4. **Please be patient.** The underlying infrastructure is doing a lot of operations to clone your VM from a template. Once you click Create you will see a spinning wheel for up to a minute (don't interrupt it). You will also see notice that the cloning is in progress.





Infrastructure You Can Rely On!

## Cloud Propeller, Inc. – MultiPortal User’s Guide

**Date:** December 3rd, 2025, **Version:** 0.0 (Pre Release)

Create Virtual Machine from template



Create Virtual Machine from template

General Configuration

Templates

System Setup

3/3

### System Setup

Setup the system configuration for the new virtual machine.

Storage Policy

PLATINUM-P2



← Back

Creating Virtual Machine

### TESTVM

Virtual Machine

TestVM

Actions

Console

Powered Off

QEMU Agent Enabled: No

QEMU Agent Running: No

HA Rules Available

Tenant

Virtual Data Center

Post-Clone Tasks Pending

The following tasks are being processed in the background:

Network Configuration - Pending

Tasks are processed every 30 seconds. Please refresh the page to see updates.



**Infrastructure** You Can Rely On!

## **Cloud Propeller, Inc. – MultiPortal User’s Guide**

**Date:** December 3rd, 2025, **Version:** 0.0 (Pre Release)

### Create New Virtual Machine

1. Fill in the name of the VM (note this has no relation to the hostname of the guest OS), choose the OS type, and choose the version. Click Next.

The screenshot shows a web-based configuration window titled "New Virtual Machine" with a close button (X) in the top right corner. The window has a horizontal tab bar with seven tabs: "General Configuration" (selected), "System Settings", "Hardware Settings", "Storage Configuration", "Network Configuration", "CD/DVD Drive", and "Boot Order". Below the tabs, it indicates "1/6" and "General Configuration". A descriptive text says: "Configure the basic settings for your new virtual machine, including its name, operating system, and essential options." The form contains three main sections: 1. "Name": A text input field with "TestVM" entered and a green checkmark icon on the right. Below it is a small note: "Give your Virtual Machine an identifying name you will remember them by." 2. "Choose OS Type": Four selectable boxes. "Windows" is selected, indicated by a blue checkmark and a Windows logo icon. The other options are "Linux" (with a Linux logo icon), "Unix" (with a Unix logo icon), and "Other" (with a monitor icon). 3. "Version": A dropdown menu showing "Microsoft Windows 11/2022" with a green checkmark and a dropdown arrow. At the bottom of the form is a checkbox labeled "Attach VirtIO driver ISO" with a subtext "Add additional drive for VirtIO drivers." The checkbox is checked. A green "Next Step" button with a right-pointing arrow is located at the bottom right of the form.

- a. NOTE: for Windows you will need to Attach the VirtIO driver ISO so that you can load the storage driver during Windows Setup.



Infrastructure You Can Rely On!

## Cloud Propeller, Inc. – MultiPortal User’s Guide

**Date:** December 3rd, 2025, **Version:** 0.0 (Pre Release)

2. Select the BIOS type (For most modern operating systems UEFI is recommended). Further select options such as secure boot keys and TPM. Click Next Step.

New Virtual Machine ×

General Configuration

System Settings

Hardware Settings

Storage Configuration

Network Configuration

CD/DVD Drive

Boot Order

2/6

### System Settings

Configure the system settings for your new virtual machine, including BIOS, TPM, and other essential options.

**BIOS**

OVMF (UEFI) ✓

SeaBIOS

OVMF (UEFI)

☒ Add additional drive for EFI disk

☒ **Pre-Enroll Keys**  
Add secure boot keys to a VM UEFI firmware

☒ **Enable QEMU Guest Agent?**  
The QEMU Guest Agent must be installed for agent functions to work.

☒ **Add TPM?**  
Add a Trusted Platform Module (TPM) to your VM.

v2.0 ✓

← Back

Next Step →

- a. Modern versions of Windows prefer all options with TPM 2.0.
- b. QEMU Guest Agent is always recommended so you have extra options in MultiPortal (such as Graceful Shutdown).

Cloud Propeller, Inc.

Page 11 of 22



Infrastructure You Can Rely On!

## Cloud Propeller, Inc. – MultiPortal User’s Guide

**Date:** December 3rd, 2025, **Version:** 0.0 (Pre Release)

3. Select your desired CPU and RAM settings. Click Next Step.

New Virtual Machine ×

General Configuration System Settings **Hardware Settings** Storage Configuration Network Configuration CD/DVD Drive Boot Order

3/6  
Hardware Settings  
Configure the hardware settings for your new virtual machine, including CPU, memory, and other essential options.

**CPU**

✓ Sockets  ✓ Cores Total Cores: 4

**CPU Type**

**Memory**  
 GiB

← Back Next Step →

- a. It is recommended to set Socket to 2 to match the underlying host for best performance.
  - b. CPU Type it is recommended to sue x86-64-v4 for best performance. However other types are available for compatibility when required.
4. Enter the size of the storage drives for your VM and select the correct storage policy. Click Next Step.

New Virtual Machine ×

General Configuration System Settings Hardware Settings **Storage Configuration** Network Configuration CD/DVD Drive Boot Order

4/6  
Storage Configuration  
Configure the storage settings for your new virtual machine, including disk size and storage policy

**Disk** **Disk Size** **Storage Policy**

New Storage #0  GiB

Add Storage Device

← Back Next Step →

5. Select your network and NIC model. VirtIO is recommended for best performance. You will also need to check the Connected box to connect the network (equal to plugging/unplugging the



Infrastructure You Can Rely On!

## Cloud Propeller, Inc. – MultiPortal User’s Guide

**Date:** December 3rd, 2025, **Version:** 0.0 (Pre Release)

ethernet cable from a physical server). Click Next Step.

New Virtual Machine ✕

General Configuration

System Settings

Hardware Settings

Storage Configuration

Network Configuration

CD/DVD Drive

Boot Order

5/6

### Network Configuration

Configure the network settings for your new virtual machine, including network adapters, MAC addresses, and NIC models.

Adapter

Network

MAC Address

NIC Model

Connected

Action

New Network #0	C-VLAN - Priv01 VLAN <span>▼</span>		VirtIO <span>▼</span>	<input checked="" type="checkbox"/>	<span>Remove</span>
----------------	-------------------------------------	--	-----------------------	-------------------------------------	---------------------

← BackNext Step →

- Attach any desired ISO images to the virtual machine. At a minimum you will need to attach the installation ISO for the operating system. Click Next Step.

New Virtual Machine ✕

General Configuration

System Settings

Hardware Settings

Storage Configuration

Network Configuration

CD/DVD Drive

Boot Order

6/6

### Disc Drive Configuration

Configure the CD/DVD drive settings for your new virtual machine.

New CD/DVD Drive #0

Windows Server 2025 (24H2.8, x64) ▼

Remove

← BackNext Step →

- Toggle on the boot options you desire. You can also reorder the boot options, however generally it is best to have Storage as your first option, and CD/DVD as the next one. This will allow you



Infrastructure You Can Rely On!

## Cloud Propeller, Inc. – MultiPortal User’s Guide

**Date:** December 3rd, 2025, **Version:** 0.0 (Pre Release)

to boot from the ISO first, then the storage post OS setup.

New Virtual Machine ×

General Configuration

System Settings

Hardware Settings

Storage Configuration

Network Configuration

CD/DVD Drive

Boot Order

7/7

Boot Order

Configure the boot order for your new virtual machine.

Storage #0

100 GiB (PLATINUM-P2)

Network #0

C-VLAN - Priv01 VLAN

CD/DVD Drive #0

Windows Server 2025 (24H2.8, x64)

**Note:** Drag and drop the items to change the boot order. The first item in the list will be the first device to boot.  
Use the toggle switch to enable or disable specific devices for booting. Devices that are disabled will not be used for booting.

← Back

Create Virtual Machine

- Click Create Virtual Machine. You will see the progress in the bottom status console followed by a prompt on the screen when it is complete.



**Infrastructure** You Can Rely On!

## Cloud Propeller, Inc. – MultiPortal User's Guide

**Date:** December 3rd, 2025, **Version:** 0.0 (Pre Release)

Task	Status	Created By	Start Time	Completion Time	Progress
Infrastructure Setup	Completed				100%
Virtual Machine Setup	Completed				100%
Infrastructure Setup	Completed				100%



### VM Created Successfully

Would you like to view the newly created virtual machine?

Yes, view VM

Stay here

- Now you can use the Actions drop down for the VM and Start it to begin OS setup. Use Console as essentially the KVM to install the OS.

Virtual Machine

TestVM

Actions

Console

Start

Clone VM

Rename

Edit Hardware

Set Boot Order

Create Snapshot

Take Backup

Convert to Template

Delete

Yes

QEMU Agent Running: No

HA Rules Available

8.00 GiB

100.00 GiB

WINDOWS-ONLY-HOSTS

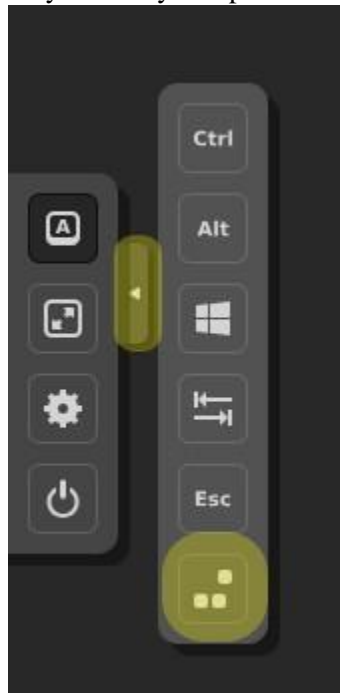


**Infrastructure** You Can Rely On!

**Cloud Propeller, Inc. – MultiPortal User's Guide**

**Date:** December 3rd, 2025, **Version:** 0.0 (Pre Release)

- a. When using the Console take of the small Arrow to the left. This is a useful menu with very critically an option for CTL+ATL+DEL.



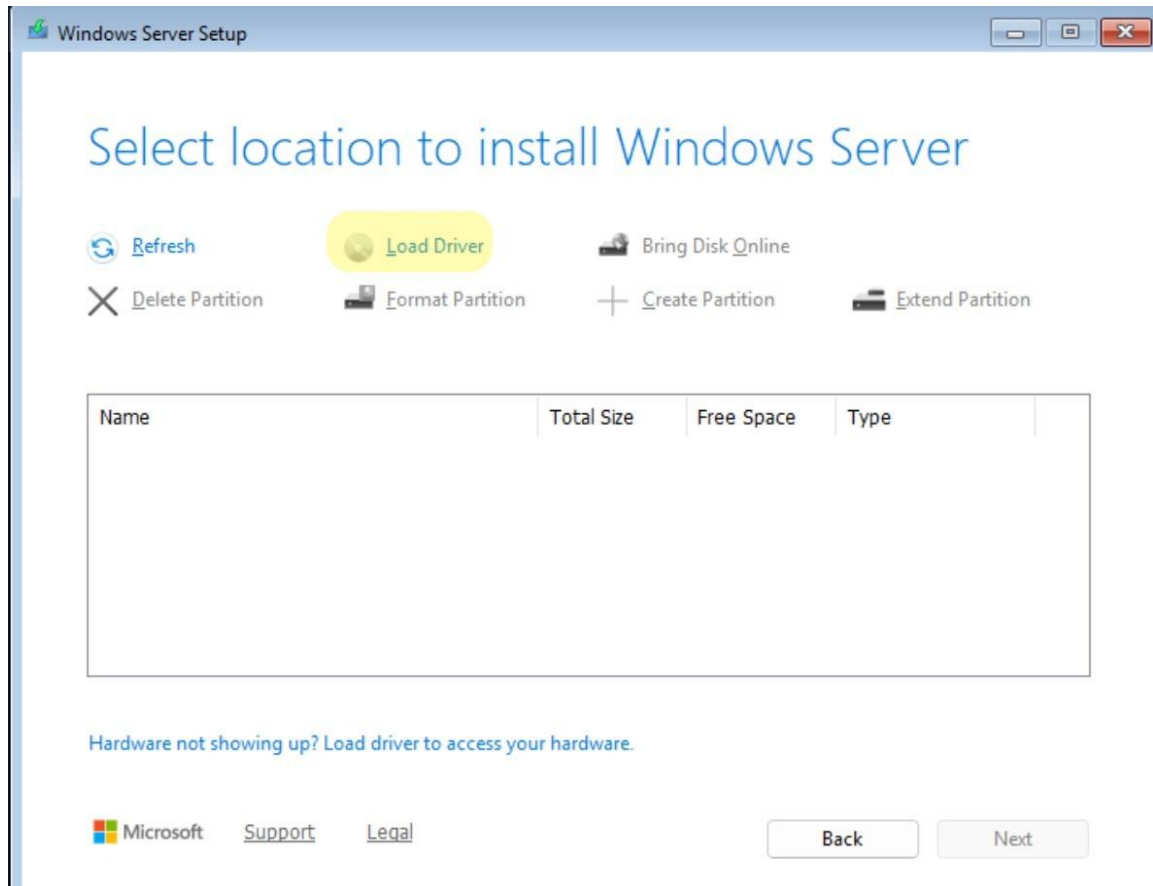
10. To Install Windows there are few extra steps that need to be followed. The first is you much load the storage driver during Windows Setup.





**Infrastructure** You Can Rely On!

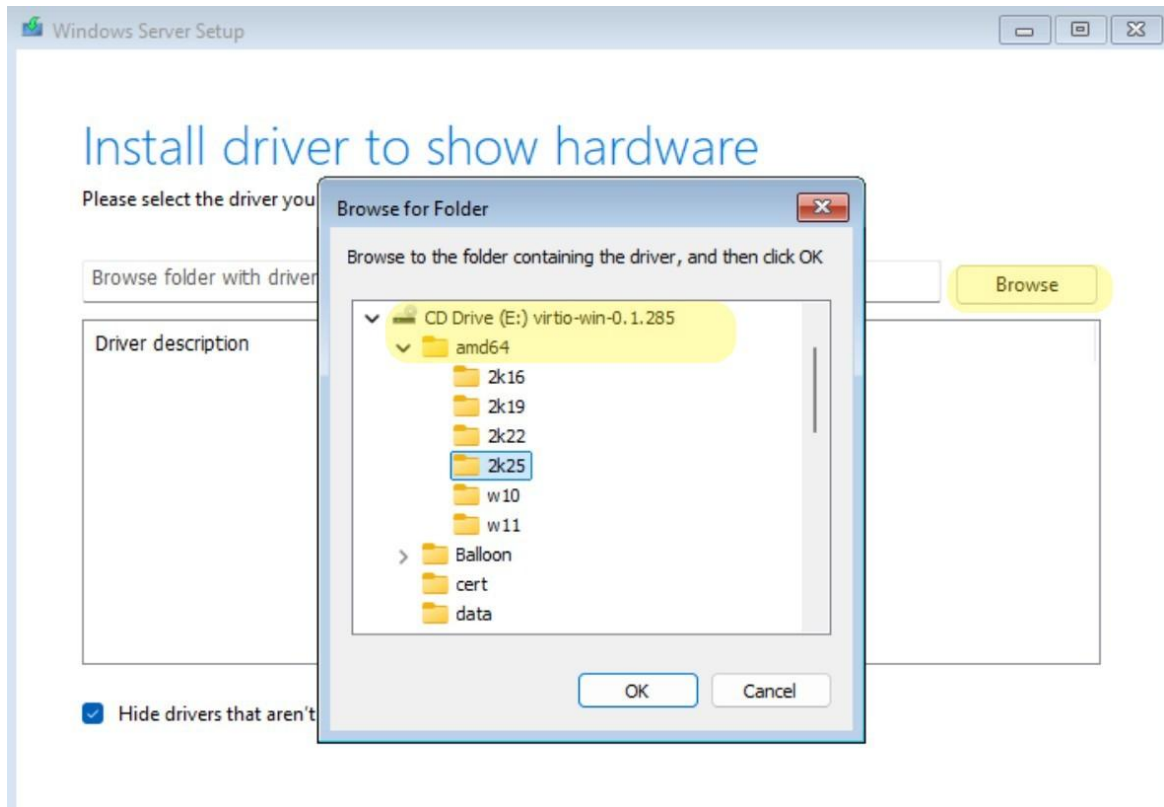
**Cloud Propeller, Inc. – MultiPortal User’s Guide**  
**Date:** December 3rd, 2025, **Version:** 0.0 (Pre Release)





**Infrastructure** You Can Rely On!

**Cloud Propeller, Inc. – MultiPortal User’s Guide**  
**Date:** December 3rd, 2025, **Version:** 0.0 (Pre Release)

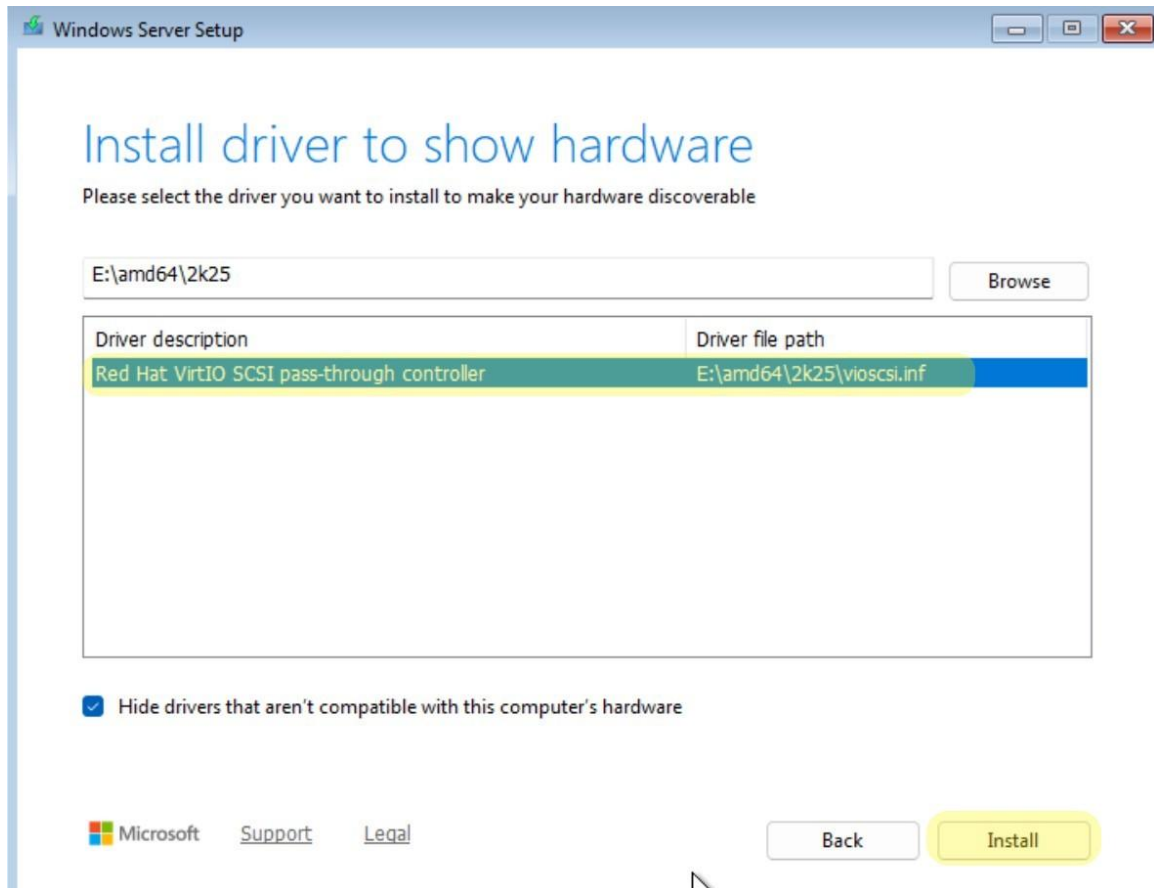




**Infrastructure** You Can Rely On!

**Cloud Propeller, Inc. – MultiPortal User’s Guide**

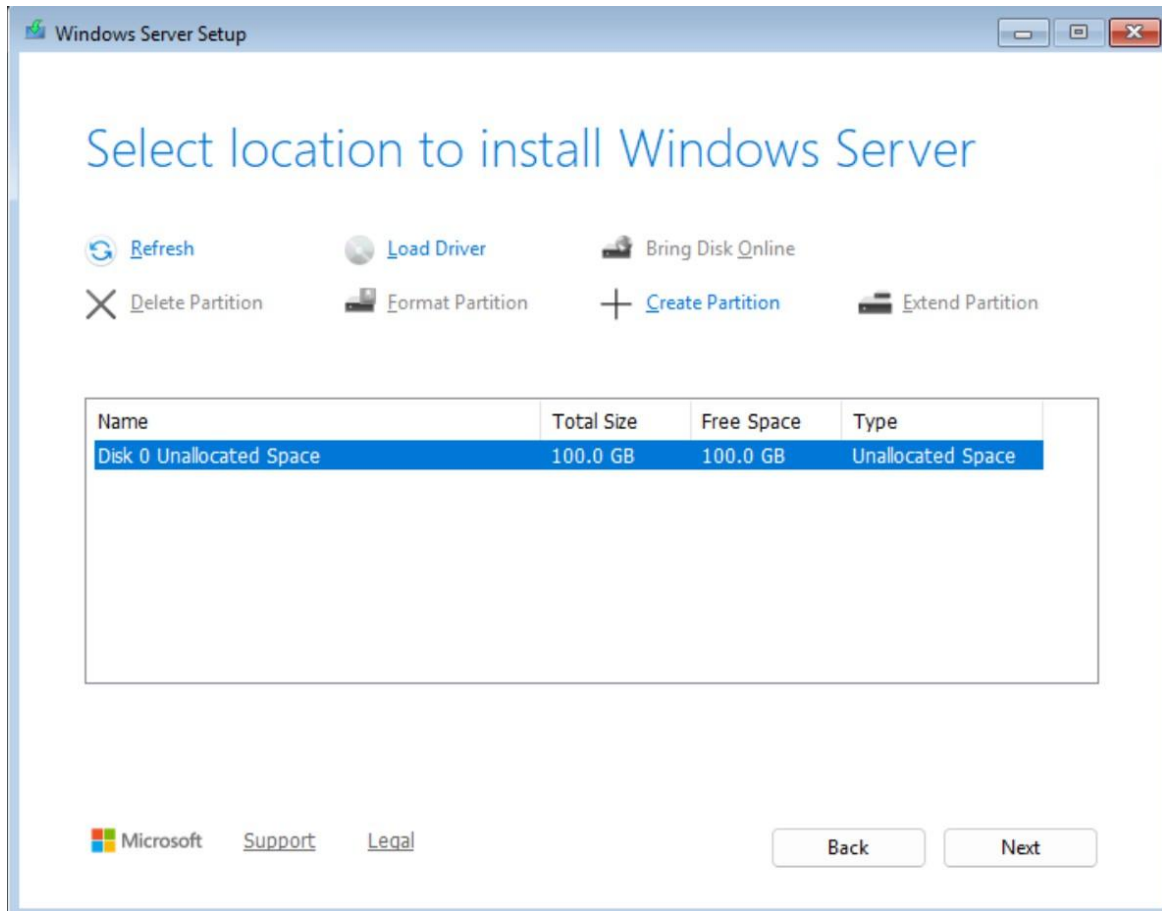
**Date:** December 3rd, 2025, **Version:** 0.0 (Pre Release)





**Infrastructure** You Can Rely On!

**Cloud Propeller, Inc. – MultiPortal User’s Guide**  
**Date:** December 3rd, 2025, **Version:** 0.0 (Pre Release)



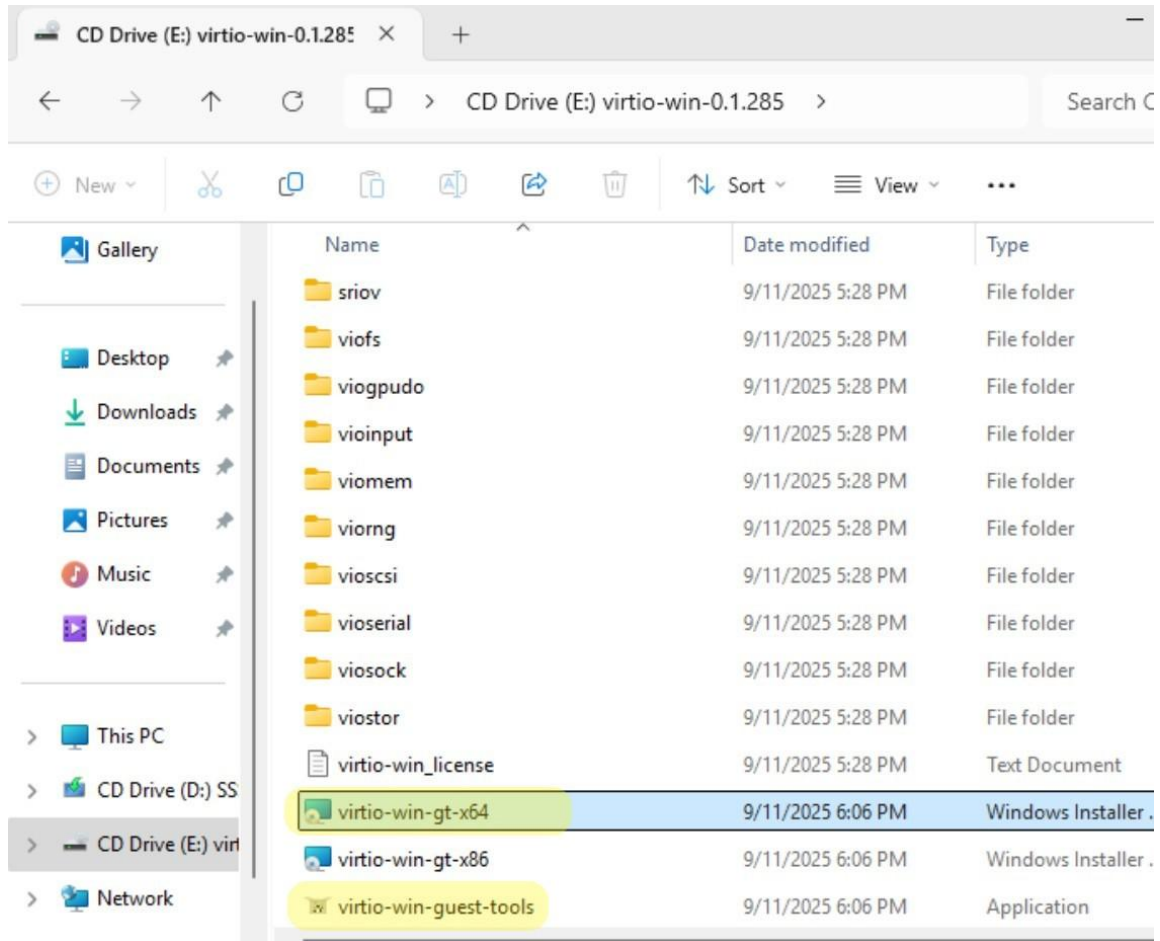


Infrastructure You Can Rely On!

## Cloud Propeller, Inc. – MultiPortal User’s Guide

Date: December 3rd, 2025, Version: 0.0 (Pre Release)

11. Once Windows is installed you must install the VirtIO Drivers and Guest Tools from the VirtIO ISO.



12. Once your operating system is installed you can Edit Hardware from the Action Menu and Remove the ISOs from the VM. You will be prompted to reboot the VM for the change to take effect.

### CD/DVD Drive





**Infrastructure** You Can Rely On!

**Cloud Propeller, Inc. – MultiPortal User’s Guide**  
**Date:** December 3rd, 2025, **Version:** 0.0 (Pre Release)

## Common Issues and Resolution.

Issue	Resolution
Place Holder	Place Holder
Place Holder	Place Holder
Place Holder	Place Holder, please contact <a href="mailto:support@cloudpropeller.com">support@cloudpropeller.com</a> .
Place Holder	Place Holder. Please contact <a href="mailto:support@cloudpropeller.com">support@cloudpropeller.com</a> immediately.